

FIND FALL WALLEYE SPOTS

The image is a promotional graphic for finding fall walleye spots. It features a central circular map of Lake Erie with various fishing spots marked in pink and purple. The map includes labels for 'SOUTH PASSAGE', 'LAKE ERIE', and 'LOTTAWA'. To the left, a fisherman in a red hoodie holds a large walleye. To the right, a fisherman in a blue jacket holds a large walleye. The background is a shimmering water surface with colorful bokeh effects. The text 'FIND FALL WALLEYE SPOTS' is prominently displayed at the top. In the bottom right corner, the logo for 'Venice Valentine SPORTFISHING' is visible.

Venice Valentine
SPORTFISHING

FIND FALL WALLEYE SPOTS

Fall walleye make distinct moves toward specific types of areas, especially as the water gets colder. Concentrating on these spots will result in more and bigger fish.

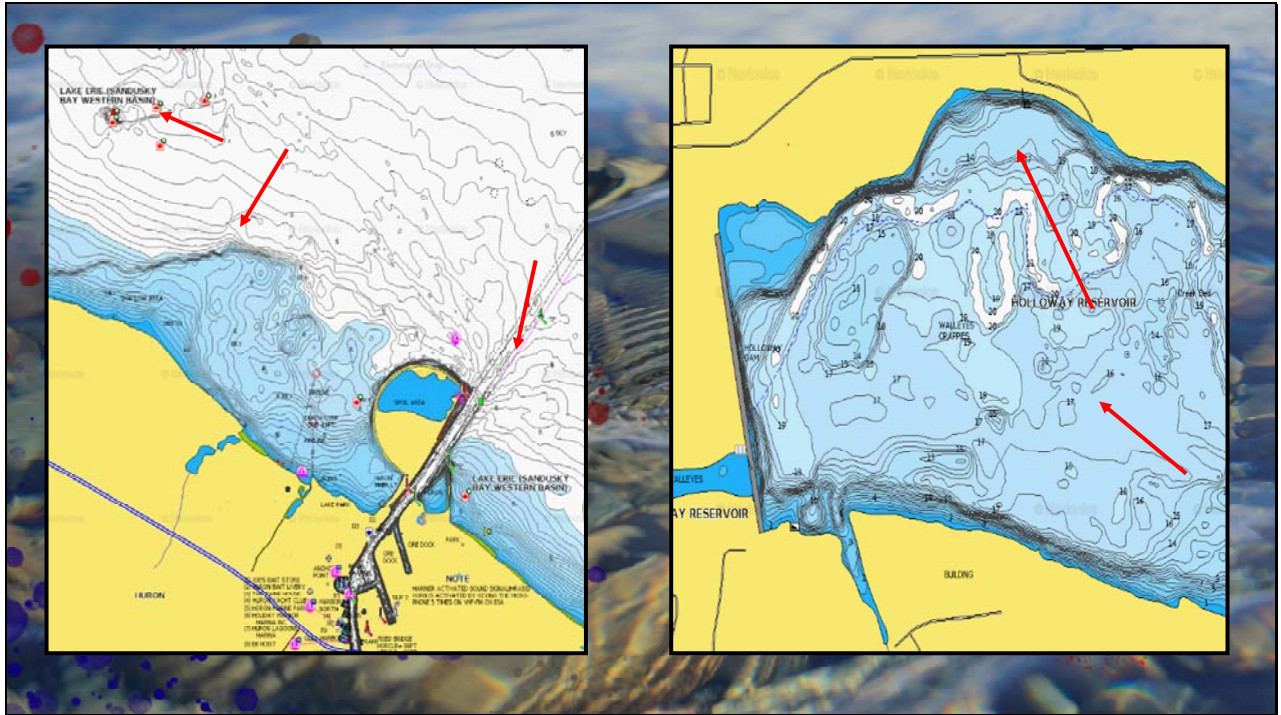
Lance Valentine
SPORTFISHING

FIND FALL WALLEYE SPOTS

Lakes and Reservoirs

1. Current, specifically incoming flow
2. Steep drop offs with access to deep water
3. Deep bays
4. Deep Water “pinch points”
5. Lower third of reservoir

Lance Valentine
SPORTFISHING



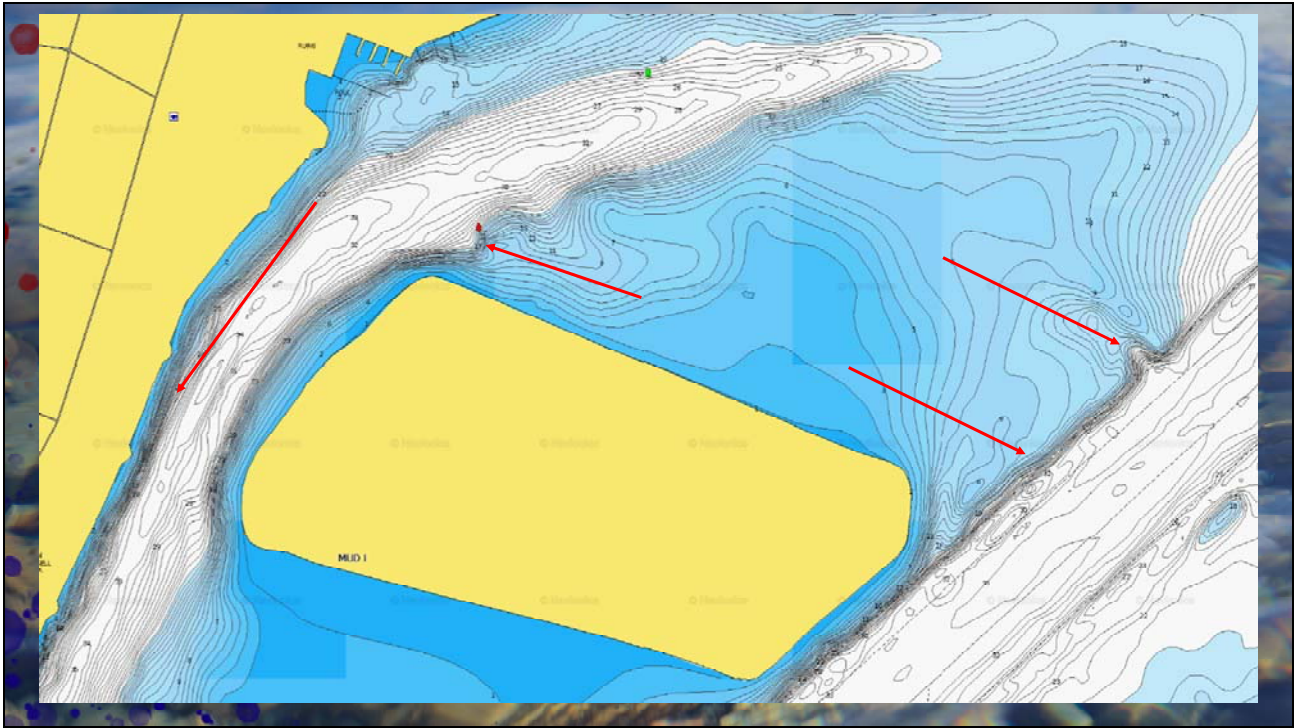


FIND FALL WALLEYE SPOTS

Rivers

1. Steep channel edges
2. Outside bends
3. Inside corners on channel edges

James Valentine
SPORTFISHING





FIND FALL WALLEYE SPOTS

Tools

1. Paper charts
2. Navionics.com
3. GPS shading
4. Custom (Live) Mapping

Lance Valentine
SPORTFISHING